

3D Puzzle: BLOCKS BLOCKS

Credits: Robert Stenberg, UNC/VCU/CCAG EM Residencies, FOAMed

Set-Up / Equipment

- Facilitator
- Blocks with pictures on it
 - 8 blocks same size, print pictures cut out and adhere to blocks so they form as picture below
 - Hodge Podge works well to adhere pictures
- Table
- Answer Sheets x Number of teams (see attached document)
- Answer Key: **MUST FILL OUT BASED ON HOW YOU MAKE BLOCKS**
 - Print out answer sheet and fill out with correct answers or modify/print answer sheet
- Writing Utensils
- Score Sheet

Goals

- Match all pictures and then state what block it is for maximal points
- Must use all blocks to fully complete. May not remove pictures off blocks.

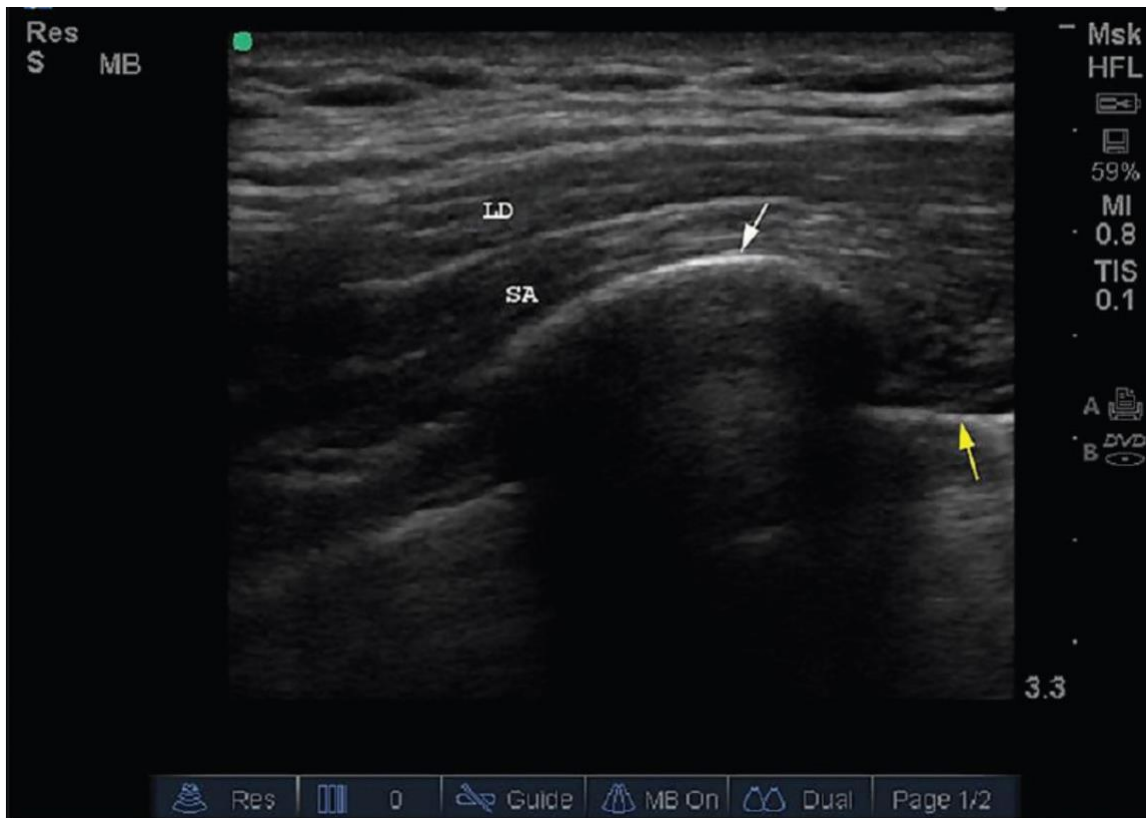
Points

- 5 points per correct puzzle
- 20 extra points if correct assemble puzzles
- 5 points per correct identification of block

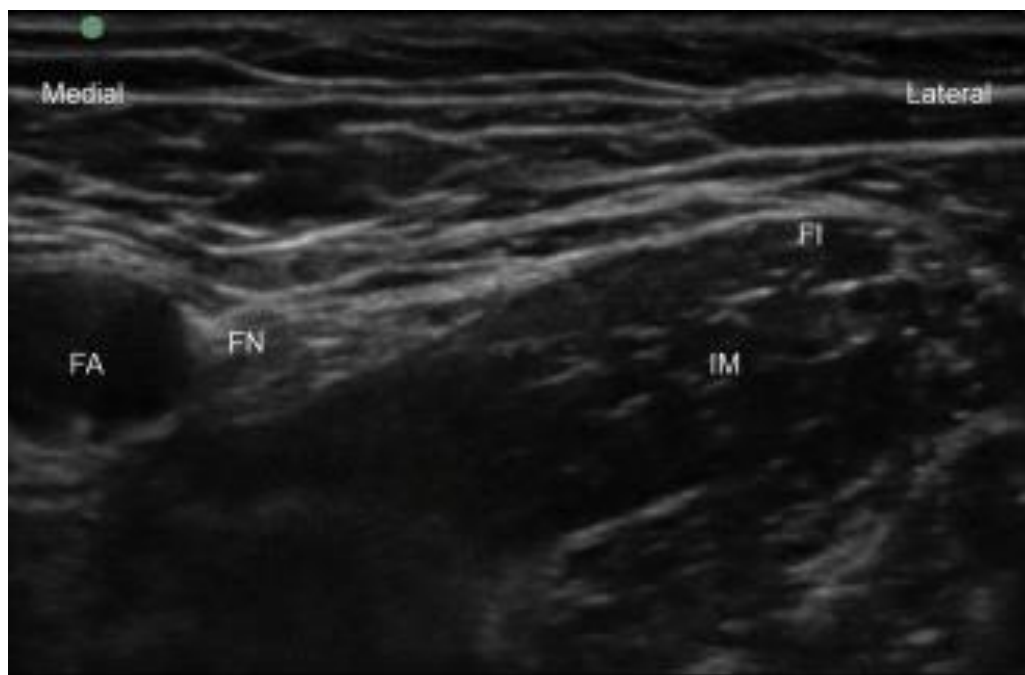


10 Blocks

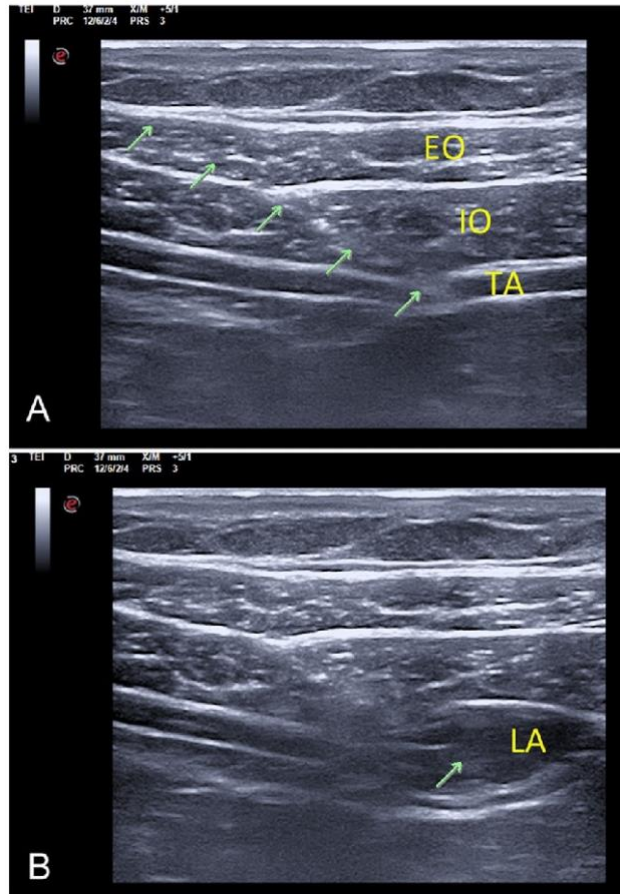
1. Serratus anterior



2. Fascia Iliaca



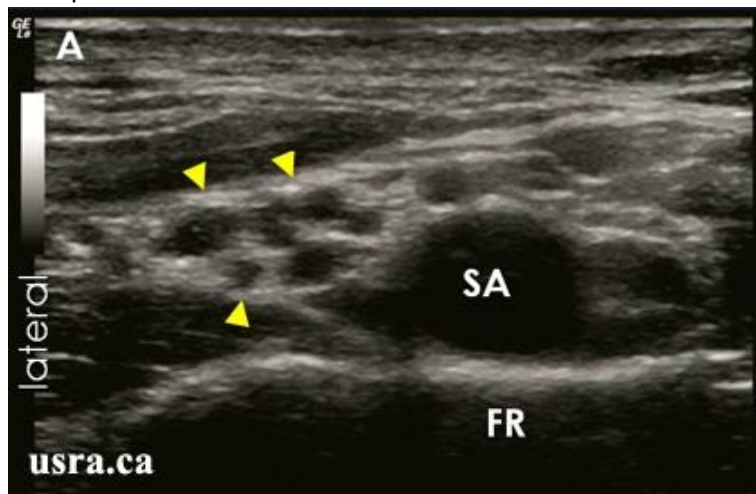
3. Transversus Abdominis



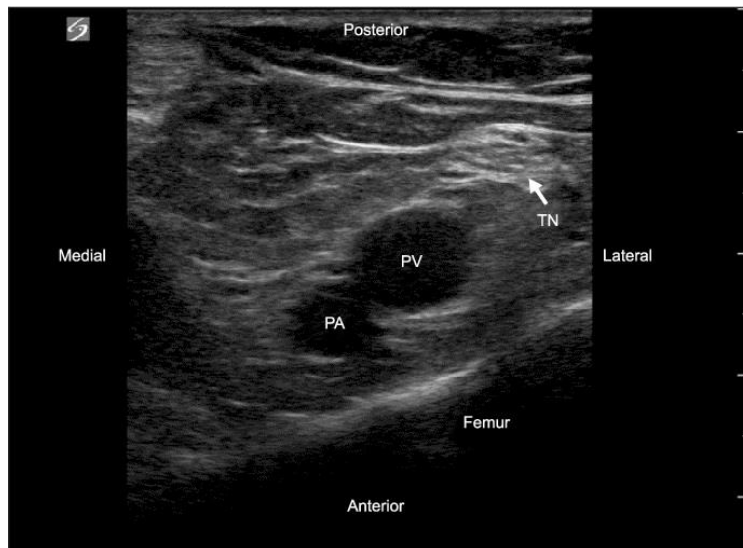
4. Quadratus Lumborum



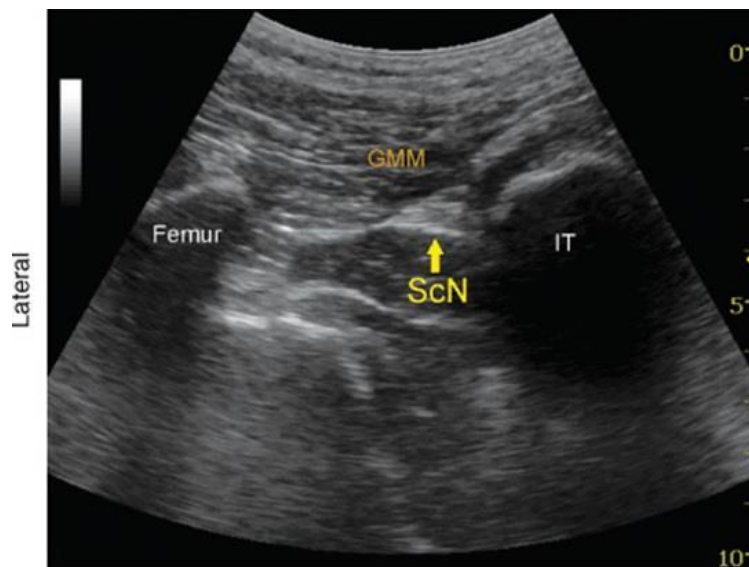
5. Supraclavicular brachial plexus



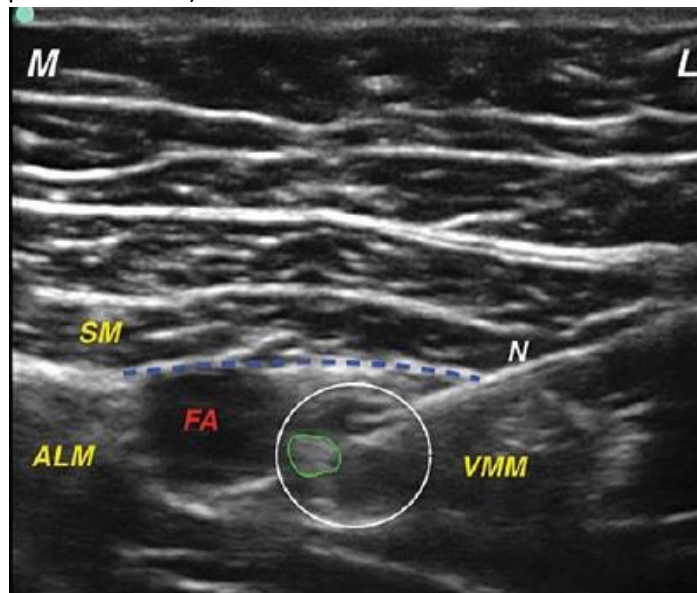
6. Popliteal Sciatic



7. Transgluteal Sciatic



8. Adductor Canal Block (Saphenous Nerve)



9. Interscalene brachial plexus



10. PENG Block (alternate to FICB) = Pericapsular Nerve Block



3DBlocks:
50 Shades of Gray
Guess Sheet

| | | | | | | |
|----------------|----------------|----------------|----------------|----------------|----------------|--|
| | SIDE: _____ | | | | SIDE: _____ | |
| SIDE: _____ | TOP: _____ | SIDE: _____ | SIDE: _____ | TOP: _____ | SIDE: _____ | |
| | SIDE: _____ | | | SIDE: _____ | | |

BLOCK 1

BLOCK 2