

Red Cup Game/Pong Game: Nostalgic Sono

Credits: Tony Downs, Robert Stenberg, UNC/VCU/CCAG EM Residencies, FOAMed

- Judge: Anyone
 - Equipment
 - o Judge
 - o Cups: at least 10, couple extras ideal
 - o Pong Balls: at least 2
 - o Ultrasound Machine, gel, towels
 - o Model/Member of team to scan
 - Game: 15-20 minutes
 - o Stand 10+ feet away from the cup section. Consider taping a line of not using a long table.
 - o Each cup is labeled with a number that corresponds to a body part
 - o The proctor has the list of the corresponding parts that they will read once a cup is made
 - o The team must obtain an acceptable image of the part on a teammate or model
 - o You must identify the body part before shooting again
 - Points
 - o Each cup made is 2 points
 - o Each successful identification is worth 3 points
 - o If all teams find complete all 20 points, the fastest team receives an extra 20 points
1. Both kidneys
 2. PLAX, PSAX, A4C of the heart
 3. Ocular nerve
 4. Ulnar nerve
 5. Posterior Tibial Nerve
 6. IVC in long axis
 7. Suprasternal Notch view of Aorta
 8. Gallbladder in long axis
 9. Perform a Fast exam
 10. Locate both IJ's and subclavians

1. Both kidneys

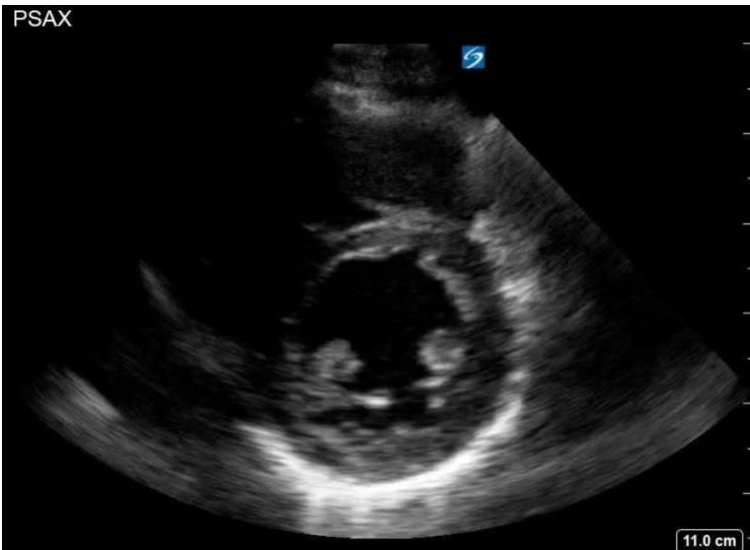


2. PLAX, PSAX, A4C of the heart

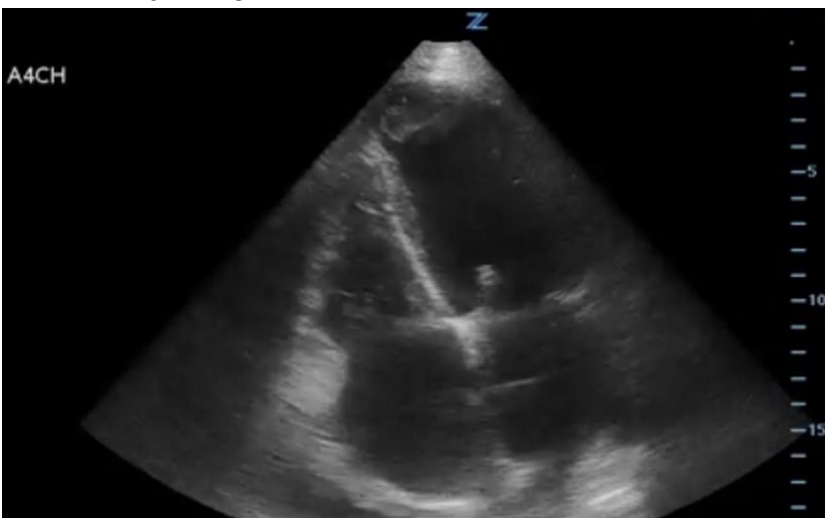
a. PLAX



b. PSAX



c. A4C

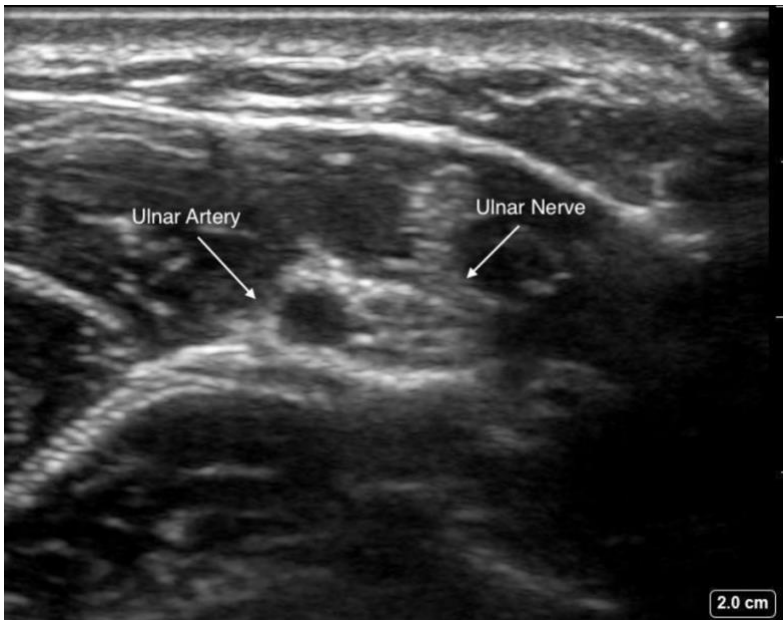


3. Ocular nerve

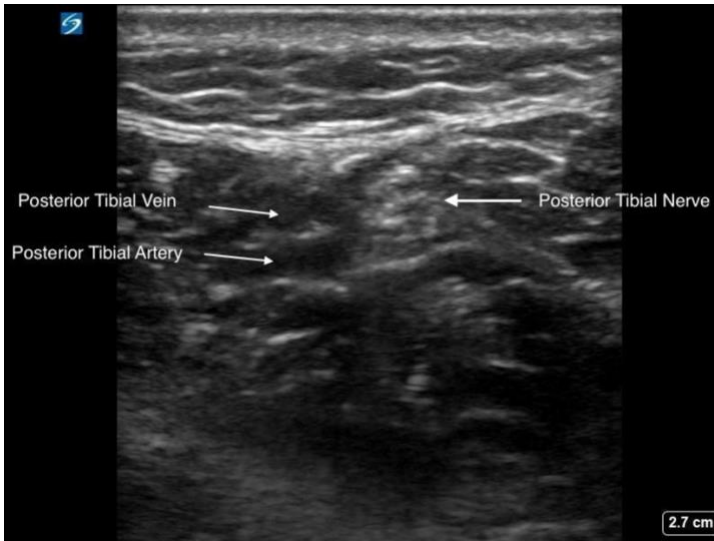


4. Ulnar nerve

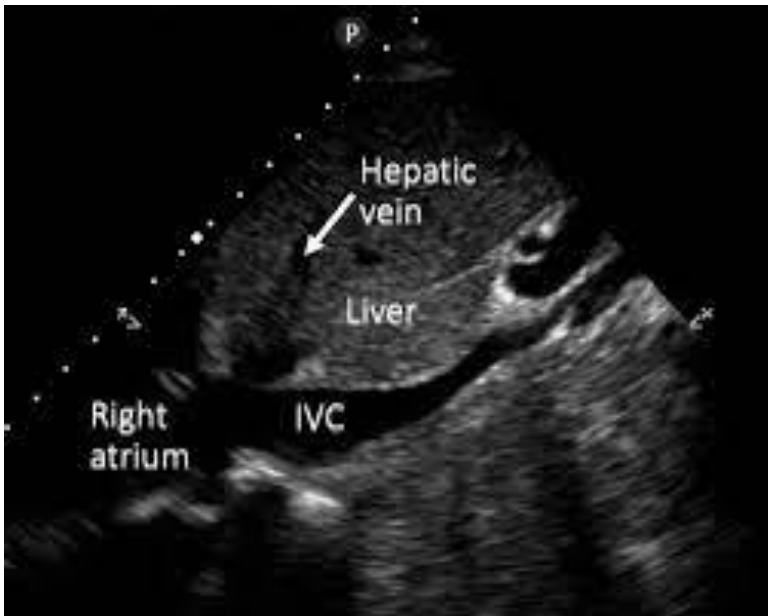
- a. Usually easiest to follow proximal from ulnar artery @ wrist



5. Posterior Tibial Nerve
a. Posterior to medial malleolus



6. IVC in long axis



- 7. Suprasternal Notch view of Aorta
 - a. Relatively superficial like 6cm, indicator towards 3 O'clock



- 8. Gallbladder in long axis



- 9. Perform a Fast exam
- 10. Locate both IJ's and subclavians

